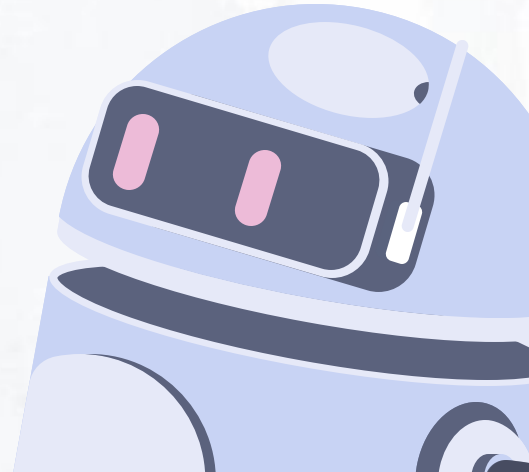


Artificial Intelligence →



(AI)

Table of contents

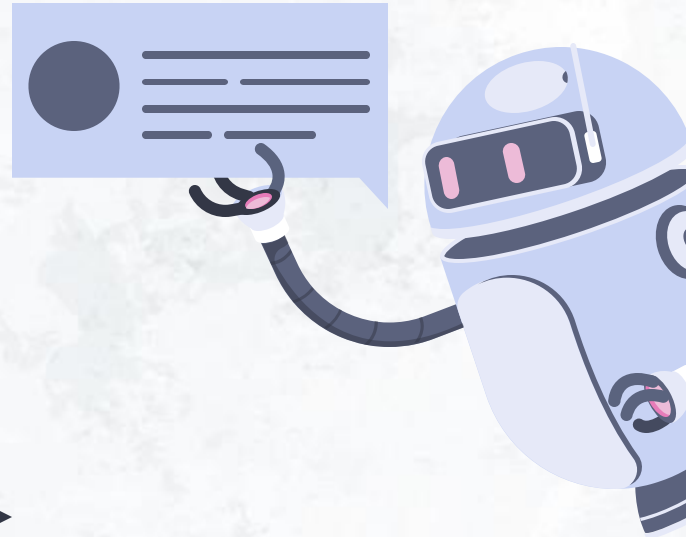
- 01 —→ What is artificial intelligence?
- 02 —→ Types of artificial intelligence
- 03 —→ Main uses of artificial intelligence
- 04 —→ Advantages and disadvantages of AI

01 →

What is artificial intelligence?

(AI)

(AI) =
Artificial
intelligence →



Artificial intelligence

Artificial intelligence (AI) is a set of **technologies** that enable computers to perform a variety of **advanced functions**, including the ability to see, understand and translate spoken and written language, analyze data, make recommendations, and so on

In other words, machines that are programmed to perform certain tasks **automatically** without the need for humans to supervise their work



02 →

Types of artificial intelligence

(AI)

Types of artificial intelligence

According to different experts, there are several types of artificial intelligence. One of the main classifications is the following:

(a) Reactive machines —→

This type of AI does not have the ability to form memories or rely on past experiences to make decisions. It is simply guided by the present or future, but has no knowledge of the past

(b) Limited memory —→

They have information of the past but in a momentary way. Since their storage is not unlimited, like the mind of a human being where it can store memories of the past, they are machines that have information from the past but in a momentary way

Types of artificial intelligence

(c) Mind theory —→

These machines will be able to understand that human beings are made up of feelings and thoughts that modify their interaction with the world. The behavior of these machines will have to collaborate with social interaction

(d) Self-awareness —→

The ultimate goal of artificial intelligence is to create machines that are self-aware

03 →

Main uses of artificial intelligence

(AI)

Main uses

(a) Virtual personal assistants →

These are the well-known chatbots that allow us to interact with them according to our search history

(b) Business and finance →

In this case, AI brings the possibility of generating greater security, offering new operations and being aware of relevant market information

(c) Education →

It allows to personalize them according to the students, to control attendance and evaluations, to establish teaching-learning strategies

Main uses

(d) Commercial —→

It allows to know and recommend what the customer needs, predicting trends and making very detailed analysis

(e) Health —→

Artificial intelligence is used in healthcare, specifically in chatbots that ask us about our symptoms in order to make a diagnosis. By combining certain characteristics in common, a possible solution to the problem presented by the patient can be generated without the need of a human being

04 →

Advantages and disadvantages of AI

(AI)

Advantages of artificial intelligence

(+) Automation of repetitive tasks —→

AI makes our day-to-day life much easier, as machines can perform tasks that are difficult for us automatically

(+) Reduces human error —→

Fewer errors, since there is little human involvement and the tasks are performed automatically, the probability of error is greatly reduced

(+) More room for creativity —→

It favors the creative process of the human being, since it leaves us with more time to think freely about future tasks or work actions

Advantages of artificial intelligence

(+) Increased accuracy —→

By reducing the likelihood of error, artificial intelligence provides high accuracy in decision making

(+) Decision making —→

When making decisions, AI plays a fundamental role due to its agility in the search and connection of information and also the analysis of the data collected

Disadvantages of artificial intelligence

(-) Difficulty of access to data —→

For an artificial intelligence to work properly, it must have updated and reliable data. This does not always happen in this way, because being just a machine, sometimes it does not have all the necessary data to make decisions appropriate to the needs

(-) Lack of qualified professionals —→

As this is a new technology, the number of qualified professionals who can handle these tools is very limited

Disadvantages of artificial intelligence

(-) Developing them is expensive —→

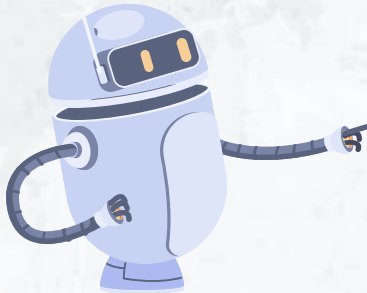
The cost is extremely high. In order to replace or match the human figure with machines, it is essential to have a large amount of money that can cover the necessary development and maintenance costs of these tools



Alternative resources

Here's an assortment of alternative resources whose style fits that of this template:

- Chat bot composition with human characters using gadgets and flying robots spreading chat bubbles flat images vector illustration



Resources

Did you like the resources in this template? Get them for free on our other websites:

Vectors

- Chat bot composition with human characters using gadgets and flying robots spreading chat bubbles flat images vector illustration
- Chat bot composition with collage of flat chat bubbles character of robot and guy at computer vector illustration
- Free vector white wall texture